

# **RAJADHANI INSTITUTE OF ENGINEERING & TECHNOLOGY**



## **STRATEGY DEVELOPMENT AND DEPLOYMENT**

## **VISION**

Groom the Youth as Innovative, Creative and Empathetic Technologists, Hospitality Professionals, Managers and Entrepreneurs for Social Transformation.

## **MISSION**

M1: To encourage holistic development of students with well balanced and student- centric curricular, co-curricular and extra-curricular activities.

M2: To promote ethical and value-oriented teaching, research and consultancy among faculty and students for social transformation.

M3: To interact with industrial organizations, governmental agencies, engineering, hospitality and business enterprises for collaborative learning.

## **VALUES**

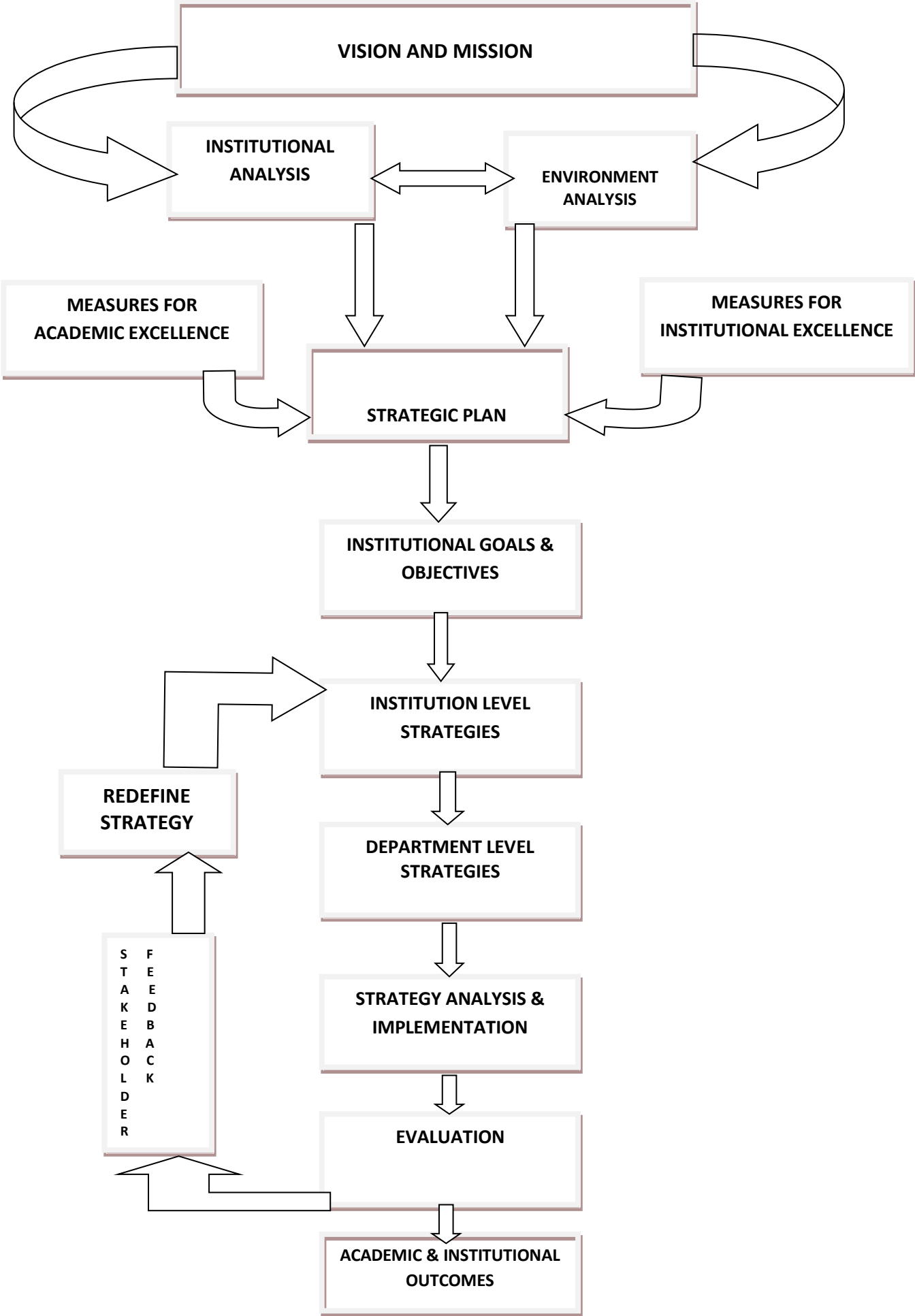
**R** Respect and Tolerance for Diversity in Mankind

**I** Integrity in Academics and Life

**E** Excellence in Knowledge and Intellectual Creativity

**T** Transparency in every Action

**STRATEGIC PLAN – DEVELOPMENT AND DEPLOYMENT PROCESS**



## **STRATEGIC GOALS**

The team of RIET after several discussion and deliberations, guided by the Vision and Mission of the Institute, Quality Policy, Core Values and Stake holder's expectations framed and developed the strategic Goals of the institute for deployment.

### **Institution Strategic Goals:**

1. Effective teaching learning process
2. Continuous Internal Quality Assurance System
3. Good governance
4. Student's development and participation
5. Staff development & welfare
6. Institute – Industry interaction and partnership
7. Entrepreneurship Development
8. Research, development and Consultancy
9. Alumni Interaction and Outreach activities
10. Community Services and Activities
11. Physical infrastructure development
12. Collaboration with international universities and organizations

## **STRATEGY DEVELOPMENT AND DEPLOYMENT**

Institutional Strategic Plan of RIET is guided by its vision and mission statements. The institute has identified several objectives taking the stakeholders such as students, faculty, non-teaching staff, alumni, Industry partners into confidence and effective strategic plans are deployed for attaining these objectives. The objectives can be broadly classified as **MEASURES FOR ACADEMIC EXCELLENCE** and **MEASURES FOR INSTITUTIONAL EXCELLENCE**. Measures like Teaching-Learning process, Improved Industry Interaction, Adjunct Faculty, NBA and ABET Accreditations, Gaining Autonomy are under academic excellence. MoUs with industries, Alumni

Funded Laboratories, Industries Funded Centers of Excellence, Infrastructure Development, Green Campus Initiatives etc. are measures under institutional excellence.

## **MEASURES FOR ACADEMIC EXCELLENCE**

- **Teaching-Learning Process**
  - Development of e- learning resources
  - Promote research culture & facilities
  - Enhancing best practices defined by the institute
- **Improved Industry – Institution Interaction**
  - Encourage faculty to undergo Faculty Internship Programme (FIP) in organizations.
  - Establishment of research labs and centers of excellence in the campus.
  - Taking up Industry based/sponsored projects and consultancy assignments.
- **Accreditations**
  - Achieve NBA accreditation for all eligible programmes.
  - Achieve higher grade in the next cycle of NAAC accreditation process.
  - Get accredited by Accreditation Board of Engineering and Technology (ABET).
- **Intellectual & Faculty Resources**
  - Hiring industry experts as adjunct faculty in various departments.
  - Rewards, recognitions and incentives for faculty members.
  - Extend support for research and consultancy activities.
- **Research, Collaborations and Autonomous Status**
  - Establishment of Research Centre
  - Establishment of industry supported laboratories
  - Achievement of autonomous status

## **MEASURES FOR INSTITUTIONAL EXCELLENCE**

- **MoUs with Industries**
  - MoUs with industrial organizations for consultancy assignments.
  - MoUs with academic institutions for collaborative and experiential learning.

- MoUs with international organizations and institutions for academic collaboration.
- **Community Services and Outreach Activities**
  - Provide vocational training /job oriented training for local inhabitants.
  - Explore possibilities with Local Self Government agencies to fortify the local community.
  - Enhancement of Scientific and Technological Environment among school children.
  - Facility augmentation for setting up start ups and Technology Incubation Centre.
- **Physical Infrastructure**
  - Modernization of Students' Amenities Centre.
  - Upgradation of Laboratory & equipment for enhancing research.
  - Establishment of Flipped Tech classrooms.
- **Sustainable Green Campus**
  - Establishment of rooftop solar plant for energy efficiency.
  - Planting more trees in the campus to protect the natural flora and fauna.
  - Nurture Herbal and Vegetable Garden in the campus.
- **Alumni Interaction**
  - Exploring contributions in form of financial and non-financial support.
  - Recognition of successful alumni during institutional events.
  - Founding of national and international alumni chapters of RIET.